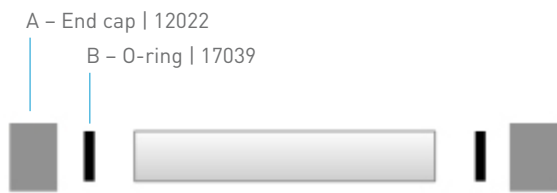


X-FLOW PILOT MODULES

1" AND 3"

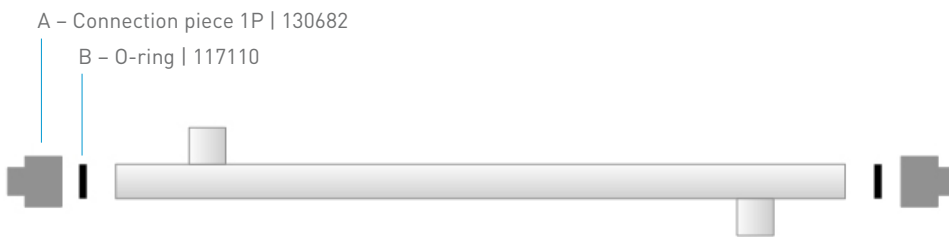
CONNECTION SPECIFICATIONS

STANDARD CONFIGURATION RX300



ARTICLE NAME		RX-300 connection set	
ARTICLE CODE		PMRX300	
<i>INCLUDES THE FOLLOWING COMPONENTS:</i>			
	ARTICLE NAME	ARTICLE CODE	REQUIRED QUANTITY PER MODULE
A	End cap	12022	2
B	O-ring	17039	2

STANDARD CONFIGURATION COMPACT 1" X 1 M



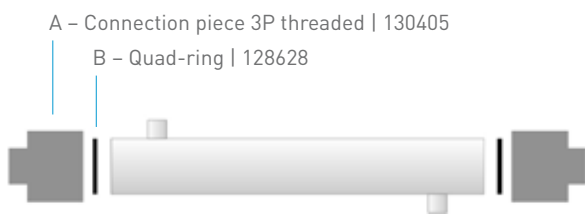
ARTICLE NAME		Compact 1" x 1 m connection set	
ARTICLE CODE		PMC11	
<i>INCLUDES THE FOLLOWING COMPONENTS:</i>			
	ARTICLE NAME	ARTICLE CODE	REQUIRED QUANTITY PER MODULE
A	Connection piece 1P	130682	2
B	O-ring	117110	2

X-FLOW PILOT MODULES

1" AND 3"

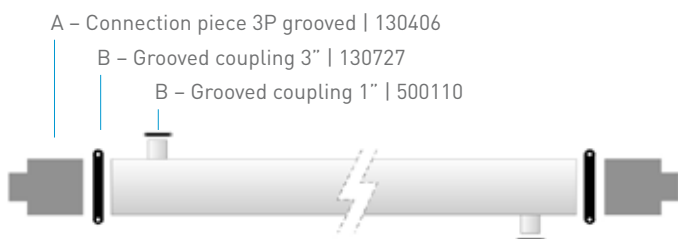
CONNECTION SPECIFICATIONS

STANDARD CONFIGURATION COMPACT 3" X 1 M



ARTICLE NAME		Compact 3" x 1 m connection set	
ARTICLE CODE		PMC31	
INCLUDES THE FOLLOWING COMPONENTS:			
	ARTICLE NAME	ARTICLE CODE	REQUIRED QUANTITY PER MODULE
A	Connection piece 3P threaded	130405	2
B	Quad-ring	128628	2

STANDARD CONFIGURATION COMPACT 3" X 3 M



ARTICLE NAME		Compact 3" x 3 m connection set	
ARTICLE CODE		PMC33	
INCLUDES THE FOLLOWING COMPONENTS:			
	ARTICLE NAME	ARTICLE CODE	REQUIRED QUANTITY PER MODULE
A	Connection piece 3P grooved	130406	2

X-FLOW PILOT MODULES

1" AND 3"

CONNECTION SPECIFICATIONS

COUPLINGS

Only the Compact 3" x 3 m configuration makes use of couplings. The connection pieces are connected to the module with standard 3" grooved couplings with gasket, style 75 or equal.

The permeate ports are grooved and 1" in diameter, the module can be connected by using standard 1" grooved couplings with gasket, style 75 or equal.

FOR THE COMPACT 3" X 3 M CONFIGURATION, THE FOLLOWING COUPLINGS APPLY:

	ARTICLE NAME	ARTICLE CODE	REQUIRED QUANTITY PER MODULE
B	Grooved coupling 1"	500110	2
C	Grooved coupling 3"	130727	2

The supply of grooved couplings by X-Flow is optional, the couplings are NOT included in the Compact 3" x 3 m | connection set.

OPERATING SPECIFICATIONS

	MAX. SYSTEM PRESSURE	TEMPERATURE RANGE
	kPa [psi]	°C [°F]
RX300 connection set	300 [43]	0-40 [32-104]
Compact 1" x 1 m connection set	1000 [145]	40 [104]
Compact 3" x 1 m connection set	1000 [145]	40 [104]
Compact 3" x 3 m connection set	1250 [181]	70 [158]

IMPORTANT NOTES

No important notes to date.



X-FLOW BV

P.O. BOX 739, 7500 AS ENSCHEDE, NETHERLANDS WWW.X-FLOW.COM

Note: The information and data contained in this document are based on our general experience and are believed to be correct. They are given in good faith and are intended to provide a guideline for the selection and use of our products. Since the conditions under which our products may be used are beyond our control, this information does not imply any guarantee of final product performance and we cannot accept any liability with respect to the use of our products. The quality of our products is guaranteed under our conditions of sale. Existing industrial property rights must be observed.
DS PILOT MODULES EN 5114 © 2014 Pentair. All Rights Reserved.

